

MONTHLY MEMBERSHIP PROGRESS REPORT

District 14 M

Results as of: 4/30/2024

GMT:

LOCATION PENNSYLVANIA

GMT CA

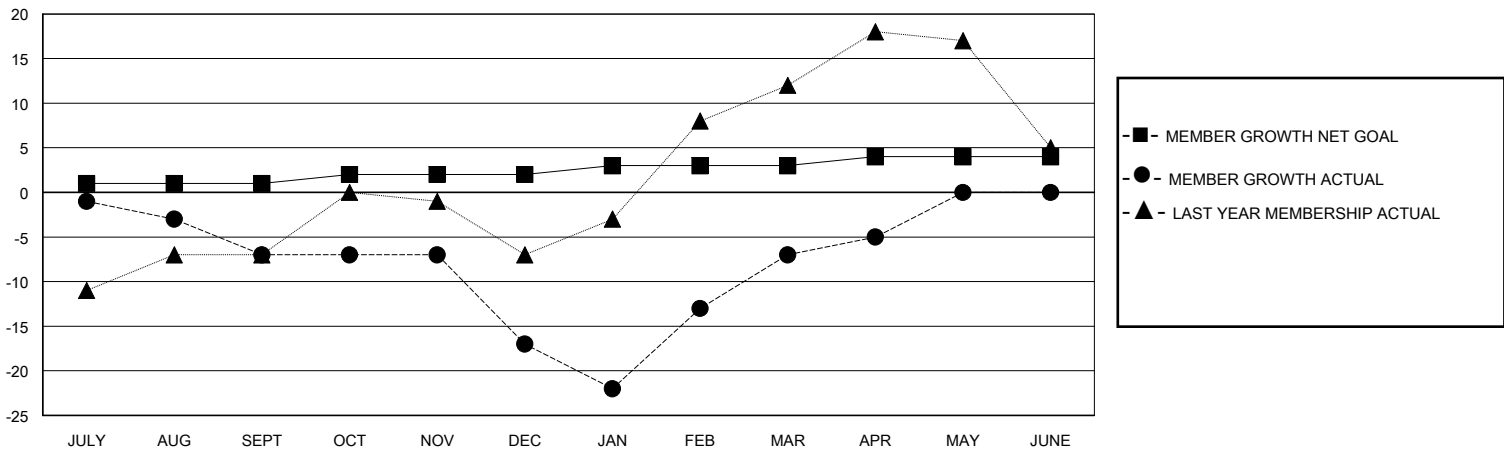
Clubs			
RESULTS FOR 2023-2024			
QUARTER	NEW CLUB GOAL	NEW CLUBS	DROPPED CLUBS
JULY/AUG/SEPT	0	0	0
OCT/NOV/DEC	0	0	0
JAN/FEB/MAR	1	0	1
APR/MAY/JUNE	0	0	0

Members			
RESULTS FOR 2023-2024			
QUARTER	MEMBER GROWTH NET GOAL	MEMBER GROWTH ACTUAL	DROPPED MEMBERS ACTUAL (including transfers)
JULY/AUG/SEPT	1	15	20
OCT/NOV/DEC	1	15	24
JAN/FEB/MAR	1	21	11
APR/MAY/JUNE	1	5	3

GOALS AND ACTUAL NEW CLUBS CUMULATIVE



GOALS AND ACTUAL MEMBERS CUMULATIVE



DROPPED CLUBS: 1

21 CLUBS OF 41 ADDED 1 OR MORE NEW MEMBERS

GENDER DISTRIBUTION

MALE 628 (62.12%)
FEMALE 382 (37.78%)

DROPPED MEMBERS

DECEASED	14
CLUB CANCELLED	0
OTHER	44
TOTAL	58

[CLICK HERE FOR CUMULATIVE MEMBERSHIP DATA](#)

TOTAL FAMILY UNIT MEMBERS	215
FAMILY MEMBERS PAYING HALF DUES	114